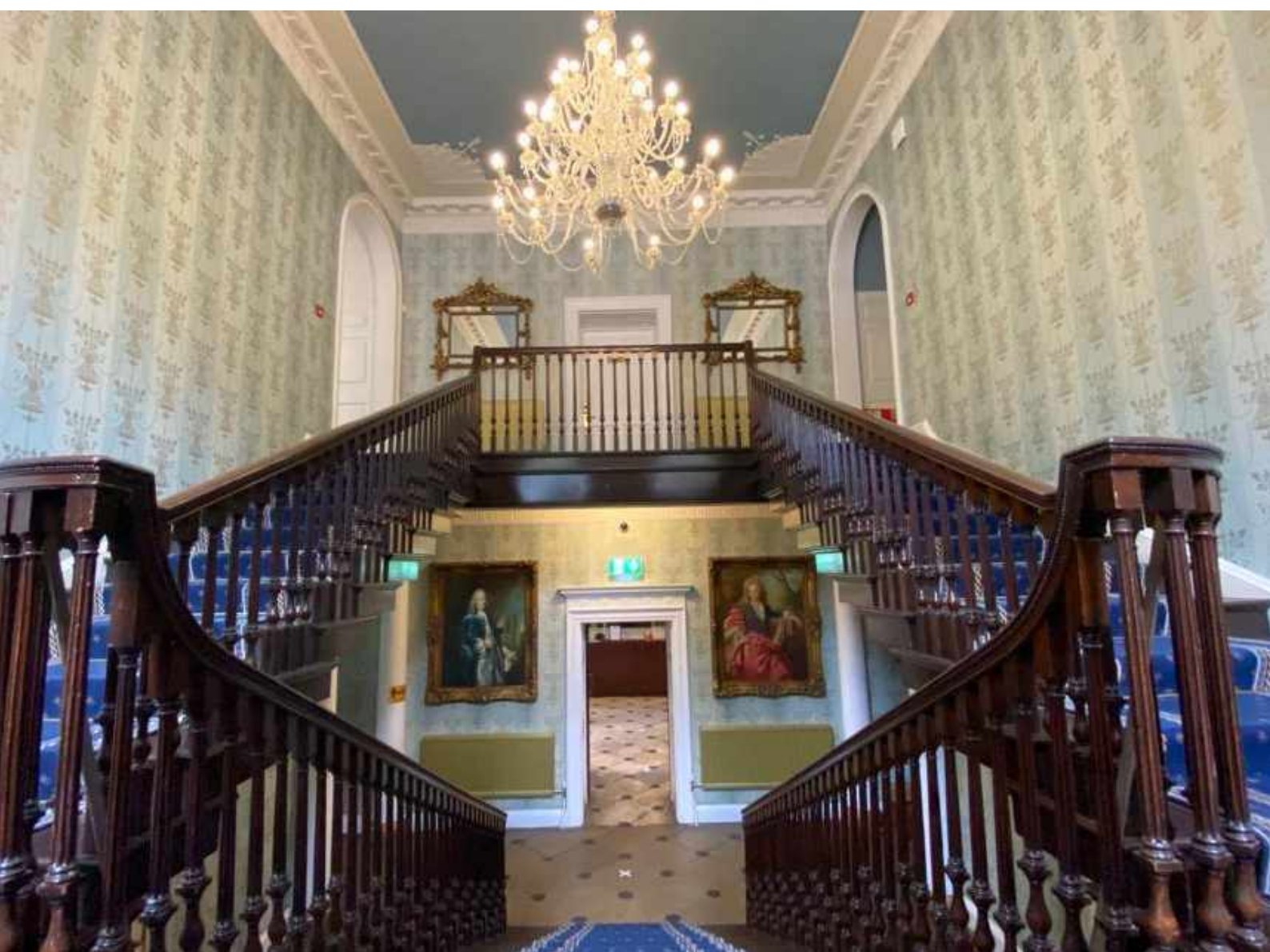




# COLWICK HALL HOTEL

---

Accommodation guide



---

**RACECOURSE ROAD, NOTTINGHAM, NG2 4BH**



## SIGNATURE 'LORD BYRON' SUITE - ROOM 103



Named after Lord Byron, this is the largest bedroom in the hall at 80sqm. An extremely spacious room with fireplaces, king size bed with coronet, seating area, amazing views, balcony overlooking the racecourse, his and hers Victorian style basin, separate shower, and a free standing bath in a most luxurious setting.

Located on the first floor, up the grand staircase.



# 'WILLIAM WORDSWORTH' BRIDAL SUITE - ROOM 104

Page 01



A romantic luxury bedroom with four poster bed, and a gorgeous lake view. Stunning bathroom with Victorian claw bath in the centre of the marble floor, a large walk in shower, and his and hers basin and attractive fireplace.

Located on the western wing and entrance up the grand stairs



## 'AMADEUS MOZART' - ROOM 107

Another gorgeous signature suite, with traditional French Parisian style décor. A beautiful set of antique furniture including a stunning bed. A very spacious bedroom which leads through to an amazing bathroom, where the classic decor is continued.

Located on the 1st floor up the stone staircase overlooking the racecourse.





## '1ST DUKE OF WELLINGTON' - ROOM 105

A luxury bedroom decorated in a rich crimson and gold. Hugely majestic with high ceilings, and a perfect view of the lawns, fountain and lake - making it most idyllic. Relax on the chaise, and enjoy the refreshingly beautiful bathroom with stunning bath and large separate shower.

Located on the 1st floor up the stone staircase.





## 'KING GEORGE III' - ROOM 106

A grand luxury suite, giving all the gold vibes. Gorgeous bed in the centre of a spacious room, with another beautiful and large bathroom with separate walk in shower and bath.

Located on the 1st floor up the stone staircase. All the grandeur you need for a luxurious visit.





## 'LUDWIG VAN BEETHOVEN' - ROOM 102

A luxury room with views of the north front and racecourse. Another spacious bedroom, where you can relax on the chaise and enjoy the scenic setting. A super comfy king bed, and the option of a relaxing bath or large walk in shower. You won't want to leave!

Located through the doors opposite reception, up the grand staircase.



## **'CAPTAIN JAMES COOK' - ROOM 201**

A spacious deluxe room which can double up as a family room. There is a spacious seating area and sofa bed. Located on the second floor, up the stone stair case.



## **'ADMIRAL HORATIO NELSON' - ROOM 209**

A stylish deluxe bedroom offering a lively living space. Superb sized bathroom with twin sinks, glorious bath and shower. Located on the second floor, up the stone stair case. Again perfect as a family room for two adults and 2 children.





## 'JOHN CONSTABLE' - ROOM 101



A beautiful standard room with Eastern Oriental decorations and a stunning classic double wooden bed. The bathroom has a glass shower cubicle and separate bath. Cosy and idyllic for your next visit.

Located on the first floor, up the grand staircase, through the doors opposite our reception desk.



## 'SAMUEL JOHNSON' - ROOM 205



Page 01



This cosy modern standard room is a wonderful accommodation option for the solo traveller, but can be also used for couples. A modern bathroom with high quality fittings, with a shower and bath.

Located on the second floor up the stone stair case.





### **'WILLIAM BLAKE' - ROOM 208**

Standard room adorning quirky features from crooked door frames to exposed beams. A light airy feel in a contemporary setting. Located on the second floor, retaining many original features.

### **'WARREN HASTINGS' - ROOM 206**

This cosy modern standard room is a fantastic option for accommodation, with a modern fitted bathroom. Located on the second floor, up the stone stair case.





## **'GEORGE WASHINGTON' - ROOM 204**



A quirky but cool standard bedroom, offering a unique modern space with a bathroom boasting gorgeous fittings. Perfect for couples, the solo traveler, or small groups wanting adjacent rooms. Located on the second floor, up the stone stair case.

## **'CAPTAIN FRANCIS LIGHT' - ROOM 202**

A modern standard room ideal for couples and solo travelers. A beautiful bathroom with both a bath and shower. Located on the second floor, up the stone stair case.





### **'WILLIAM PITT THE YOUNGER' - ROOM 207**

A spacious standard room offering a large living space. The room is ideal for families and also has a spacious bathroom with both a bath and a shower.

Located on the second floor, up the stone stair case.

### **'ROBERT BURNS' - ROOM 203**



A beautifully decorated modern standard room ideal for couples and solo travelers. The bathroom offers luxurious modern fittings with both a bath and shower.

Located on the second floor, up the stone stair case.